

1.1 High AC Current Capacitors / Heavy Current Capacitors / Resonant Capacitors :

LC1-AN / LC2-AN / LC3-AN series :

Applications :

High Continuous AC Current applications, High Frequency AC/DC Filter, Medium Frequency Power applications, Induction Heating Equipments, High Current Welding, Resonant Circuits, Motor Controls; Oscillating, Bypass and Coupling circuits,.

Properties :

Doesn't need any Water or Force Air Cooling
 High RMS Ripple Current with 100% duty
 Low ESR and ESL
 Low Thermal Resistance
 High continuous power with Lower Internal loss
 High Operating Temperature range up to +105C ranges
 Plastic Enclosure and Light Weight
 Flame Retardant UL94-V0 grade

Electrical Characteristics :

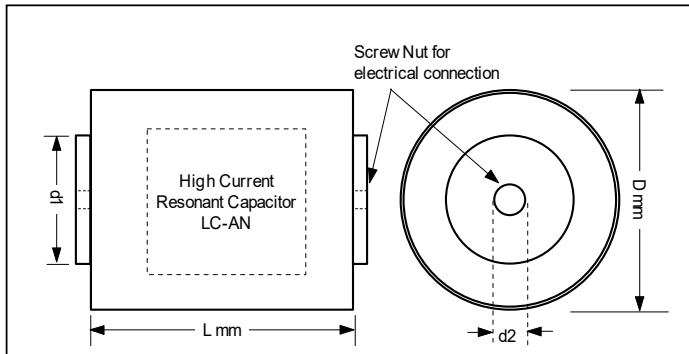
Rated Voltage : 125 – 1,400Vrms (Support higher voltage requirement)
 Capacitance range : 0.025 – 100uF (can be customized)
 Ripple RMS Current up to 250A - All the listed Currents are for 100% duty.
 Reactive Power up to 80kVAR

Other Electrical Characteristics :

Capacitance Tolerance : +/-5%; +/-10%
 Operating Temperature : +70C / +85C / +90C / +105C
 Thermal Resistance R θ : refer to the table below

Thermocouple can be built-in, capacitor internal temperature can be measured. The output temperature signal can be used as one of the reference signals in the circuit and trigger other function.

Specifications and Size : LC1-AN / LC2-AN / LC3-AN series :



LC3-AN 125Vrms / 200Vdc

Part Number	Cn uF	Diameter D mm	Length L mm	Max. Irms +55C	R θ C/W +55C	Max. Power KVAR +55C	Max. Irms +85C	R θ C/W +85C	Max. Power KVAR +85C	Max. Irms +105C	R θ C/W +105C	Max. Power KVAR +105C	ESR mohm 100khz 25C	Stray Inductance nH
LC3-AN256K125VR	25	65	64	40	2.1	5	30	3.7	3	20	8.3	2	1.5	30
LC3-AN306K125VR	30	65	64	45	1.8	5	32	3.6	4	23	7.0	3	1.4	30
LC3-AN406K125VR	40	65	64	50	1.8	6	35	3.7	4	25	7.3	3	1.1	30
LC3-AN506K125VR	50	65	64	50	1.9	6	35	3.9	4	25	7.6	3	1.1	30
LC3-AN606K125VR	60	65	64	60	1.5	7	45	2.7	5	30	6.2	3	0.9	30
LC3-AN706K125VR	70	90	64	70	1.2	8	50	2.4	6	35	4.9	4	0.8	30
LC3-AN806K125VR	80	90	64	85	0.9	10	60	1.8	7	40	4.1	5	0.8	30
LC3-AN906K125VR	90	90	64	90	0.9	11	65	1.8	8	45	3.7	5	0.7	30
LC3-AN107K125VR	100	90	64	100	0.9	12	75	1.6	9	50	3.6	6	0.6	30

LC3-AN 150Vrms / 250Vdc

Part Number	Cn uF	Diameter D mm	Length L mm	Max. Irms +55C	R θ C/W +55C	Max. Power KVAR +55C	Max. Irms +85C	R θ C/W +85C	Max. Power KVAR +85C	Max. Irms +105C	R θ C/W +105C	Max. Power KVAR +105C	ESR mohm 100khz 25C	Stray Inductance nH
LC3-AN256K150VR	25	65	64	40	2.1	6	30	3.7	4	20	8.3	3	1.5	30
LC3-AN306K150VR	30	65	64	43	1.9	6	30	4.0	4	20	8.9	3	1.4	30
LC3-AN406K150VR	40	65	64	50	1.6	7	35	3.3	5	25	6.4	4	1.3	30
LC3-AN506K150VR	50	90	64	65	1.1	10	45	2.2	7	30	5.1	4	1.1	30
LC3-AN606K150VR	60	90	64	75	1.0	11	55	1.8	8	40	3.5	6	0.9	30
LC3-AN706K150VR	70	90	64	90	0.9	13	65	1.7	10	45	3.6	7	0.7	30
LC3-AN806K150VR	80	90	64	100	0.9	15	75	1.6	11	50	3.6	7	0.6	30

In all circumstance, it is better to keep the actual capacitor Irms smaller than the listed Irms at the specific temperature.

LC1-AN 160Vrms

Part Number	Cn uF	Diameter D mm	Length L mm	Frequency range kHz	Max. Irms +90C	Rθ C/W +90C	Max. Power KVAR +90C	Max. Irms +105C	Rθ C/W +105C	Max. Power KVAR +105C	ESR mohm 100kHz 25C	Stray Inductance nH
LC1-AN104K160VR	0.1	50	99	500~600	55	0.4	9	40	0.8	6	3.2	5
LC1-AN114K160VR	0.11	50	99	470~520	55	0.4	9	40	0.8	6	3.1	5
LC1-AN124K160VR	0.12	50	99	435~465	55	0.4	9	40	0.8	6	3	5
LC1-AN154K160VR	0.15	50	99	350~410	55	0.5	9	40	0.9	6	2.9	5
LC1-AN174K160VR	0.17	50	99	310~340	55	0.5	9	40	0.9	6	2.8	5
LC1-AN214K160VR	0.21	50	99	260~310	65	0.4	10	48	0.6	8	2.7	5
LC1-AN254K160VR	0.25	50	99	205~265	65	0.4	10	48	0.7	8	2.5	5
LC1-AN334K160VR	0.33	50	99	187~250	78	0.3	12	58	0.5	9	2.4	5
LC1-AN504K160VR	0.5	50	99	157~210	100	0.2	16	75	0.3	12	2.3	5
LC1-AN664K160VR	0.66	50	99	134~185	118	0.1	19	88	0.2	14	2.1	5
LC1-AN105K160VR	1	50	134	108~130	120	0.2	19	90	0.3	14	1.8	7
LC1-AN125K160VR	1.2	50	169	93~120	125	0.2	20	90	0.3	14	1.6	9
LC1-AN155K160VR	1.5	50	204	78~100	130	0.3	21	100	0.4	16	1.4	12

LC3-AN 185Vrms / 300Vdc

Part Number	Cn uF	Diameter D mm	Length L mm	Max. Irms +55C	Rθ C/W +55C	Max. Power KVAR +55C	Max. Irms +85C	Rθ C/W +85C	Max. Power KVAR +85C	Max. Irms +105C	Rθ C/W +105C	Max. Power KVAR +105C	ESR mohm 100kHz 25C	Stray Inductance nH
LC3-AN156K185VR	15	65	64	30	2.1	5	20	4.8	3	15	8.5	3	2.6	30
LC3-AN206K185VR	20	65	64	35	2.1	6	25	4.1	4	20	6.4	3	2.0	30
LC3-AN226K185VR	22	65	64	35	2.2	6	25	4.3	4	20	6.8	3	1.9	30
LC3-AN256K185VR	25	65	64	40	2.1	7	30	3.7	5	20	8.3	3	1.5	30
LC3-AN306K185VR	30	90	64	50	1.6	9	35	3.3	6	25	6.4	4	1.3	30
LC3-AN336K185VR	33	90	64	50	1.7	9	35	3.5	6	25	7.0	4	1.2	30
LC3-AN356K185VR	35	90	64	55	1.6	10	40	3.0	7	30	5.3	5	1.1	30
LC3-AN406K185VR	40	90	64	65	1.2	12	45	2.6	8	30	5.8	5	1.0	30
LC3-AN477K185VR	47	90	64	75	1.0	14	55	1.9	10	35	4.8	6	0.9	30

LC1-AN 220Vrms

Part Number	Cn uF	Diameter D mm	Length L mm	Frequency range kHz	Max. Irms +90C	Rθ C/W +90C	Max. Power KVAR +90C	Max. Irms +105C	Rθ C/W +105C	Max. Power KVAR +105C	ESR mohm 100kHz 25C	Stray Inductance nH
LC1-AN104K220VR	0.1	50	99	390~600	55	0.5	12	40	1.0	9	3.2	5
LC1-AN114K220VR	0.11	50	99	360~520	55	0.5	12	40	1.0	9	3.1	5
LC1-AN124K220VR	0.12	50	99	330~465	55	0.6	12	40	1.0	9	3	5
LC1-AN154K220VR	0.15	50	99	260~410	55	0.6	12	40	1.1	9	2.9	5
LC1-AN174K220VR	0.17	50	99	230~340	55	0.6	12	40	1.1	9	2.8	5
LC1-AN214K220VR	0.21	50	99	220~280	65	0.4	14	48	0.8	11	2.7	5
LC1-AN254K220VR	0.25	50	99	180~245	65	0.5	14	48	0.9	11	2.5	5
LC1-AN334K220VR	0.33	50	99	165~223	78	0.3	17	58	0.6	13	2.4	5
LC1-AN504K220VR	0.5	50	99	140~200	100	0.2	22	75	0.4	17	2.3	5
LC1-AN664K220VR	0.66	50	99	120~175	118	0.2	26	88	0.3	19	2.1	5
LC1-AN105K220VR	1	50	134	80~112	120	0.2	26	90	0.3	20	1.8	7
LC1-AN125K220VR	1.2	50	169	70~96	125	0.2	28	90	0.4	20	1.6	9
LC1-AN155K220VR	1.5	50	204	60~80	130	0.3	29	100	0.4	22	1.4	12

LC1-AN 250Vrms

Part Number	Cn uF	Diameter D mm	Length L mm	Frequency range kHz	Max. Irms +90C	Rθ C/W +90C	Max. Power KVAR +90C	Max. Irms +105C	Rθ C/W +105C	Max. Power KVAR +105C	ESR mohm 100kHz 25C	Stray Inductance nH
LC1-AN104K250VR	0.1	90	32	520~620	85	0.2	21	60	0.3	15	3.2	5
LC1-AN114K250VR	0.11	90	32	470~520	85	0.2	21	60	0.4	15	3.1	5
LC1-AN124K250VR	0.12	90	32	435~465	85	0.2	21	60	0.4	15	3	5
LC1-AN154K250VR	0.15	90	32	350~410	85	0.2	21	60	0.4	15	2.9	5
LC1-AN174K250VR	0.17	90	32	310~340	85	0.2	21	60	0.4	15	2.8	5
LC1-AN214K250VR	0.21	90	32	250~280	85	0.2	21	60	0.4	15	2.7	5
LC1-AN254K250VR	0.25	90	32	205~245	85	0.2	21	60	0.4	15	2.6	5
LC1-AN304K250VR	0.3	90	32	192~238	100	0.2	25	75	0.3	19	2.5	5
LC1-AN334K250VR	0.33	90	32	180~223	100	0.2	25	75	0.3	19	2.4	5
LC1-AN504K250VR	0.5	90	32	157~200	150	0.1	38	120	0.1	30	2.3	5
LC1-AN664K250VR	0.66	90	32	134~175	150	0.1	38	120	0.1	30	2.1	5

LC3-AN 250Vrms / 400Vdc

Part Number	Cn uF	Diameter D mm	Length L mm	Max. Irms +55C	Rθ C/W +55C	Max. Power KVAR +55C	Max. Irms +85C	Rθ C/W +85C	Max. Power KVAR +85C	Max. Irms +105C	Rθ C/W +105C	Max. Power KVAR +105C	ESR mohm 100kHz 25C	Stray Inductance nH
LC3-AN156K250VR	15	65	64	30	2.1	7	20	4.8	5	15	8.5	4	2.6	30
LC3-AN186K250VR	18	90	64	35	2.0	9	25	4.0	6	20	6.3	5	2	30
LC3-AN206K250VR	20	90	64	40	2.2	10	30	3.8	7	20	8.6	5	1.5	30
LC3-AN226K250VR	22	90	64	45	2.1	11	35	3.5	9	25	7.0	6	1.2	30
LC3-AN256K250VR	25	90	64	55	1.8	14	40	3.5	10	25	9.0	6	0.9	30

LC2-AN 250Vrms / 1000Vdc

P/N	Cn uF	Diameter D mm	Length L mm	Max. Irms +70C	Rθ C/W +70C	Max. Power KVAR +70C	Max. Irms +85C	Rθ C/W +85C	Max. Power KVAR +85C	Max. Irms +105C	Rθ C/W +105C	Max. Power KVAR +105C	ESR mohm 100khz 25C	Stray Inductance nH
LC2-AN126K250VR	12	65	180	70	0.58	18	65	0.68	16	50	1.14	13	1.4	15
LC2-AN156K250VR	15	65	215	90	0.47	23	80	0.59	20	60	1.05	15	1.06	15
LC2-AN186K250VR	18	65	225	110	0.29	28	90	0.43	23	75	0.62	19	1.15	15
LC2-AN206K250VR	20	65	255	110	0.31	28	90	0.47	23	75	0.68	19	1.05	15
LC2-AN226K250VR	22	90	170	130	0.25	33	100	0.42	25	90	0.52	23	0.95	15
LC2-AN256K250VR	25	90	200	150	0.21	38	130	0.28	33	100	0.47	25	0.85	15
LC2-AN306K250VR	30	90	230	180	0.16	45	150	0.24	38	120	0.37	30	0.75	15
LC2-AN356K250VR	35	90	250	200	0.14	50	150	0.25	38	120	0.40	30	0.7	15
LC2-AN406K250VR	40	90	260	250	0.10	63	200	0.15	50	150	0.27	38	0.65	15
LC2-AN456K250VR	45	90	295	250	0.10	63	200	0.15	50	150	0.27	38	0.65	15
LC2-AN476K250VR	47	90	295	250	0.10	63	200	0.15	50	150	0.27	38	0.65	15

LC1-AN 300Vrms

Part Number	Cn uF	Diameter D mm	Length L mm	Frequency range kHz	Max. Irms +90C	Rθ C/W +90C	Max. Power KVAR +90C	Max. Irms +105C	Rθ C/W +105C	Max. Power KVAR +105C	ESR mohm 100khz 25C	Stray Inductance nH
LC1-AN104K300VR	0.1	50	99	285~600	47	0.9	14	34	1.6	10	3.2	5
LC1-AN114K300VR	0.11	50	99	260~520	47	0.9	14	34	1.7	10	3.1	5
LC1-AN124K300VR	0.12	50	99	240~465	47	0.9	14	34	1.7	10	3	5
LC1-AN154K300VR	0.15	50	99	190~410	47	0.9	14	34	1.8	10	2.9	5
LC1-AN174K300VR	0.17	50	99	165~340	47	0.9	14	34	1.9	10	2.8	5
LC1-AN214K300VR	0.21	50	99	160~280	55	1.0	17	41	1.3	12	2.7	5
LC1-AN254K300VR	0.25	50	99	130~245	55	0.7	17	41	1.4	12	2.5	5
LC1-AN334K300VR	0.33	50	99	120~223	66	0.8	20	49	1.0	15	2.4	5
LC1-AN504K300VR	0.5	50	99	100~200	85	0.6	26	64	0.6	19	2.3	5
LC1-AN664K300VR	0.66	50	99	90~175	100	0.4	30	75	0.5	22	2.1	5
LC1-AN105K300VR	1	50	134	60~112	100	0.3	31	77	0.6	23	1.8	7
LC1-AN125K300VR	1.2	50	169	50~96	106	0.3	32	77	0.6	23	1.6	9
LC1-AN155K300VR	1.5	50	204	40~80	110	0.3	33	85	0.6	26	1.4	12

LC2-AN 325Vrms / 1200Vdc

P/N	Cn uF	Diameter D mm	Length L mm	Max. Irms +70C	Rθ C/W +70C	Max. Power KVAR +70C	Max. Irms +85C	Rθ C/W +85C	Max. Power KVAR +85C	Max. Irms +105C	Rθ C/W +105C	Max. Power KVAR +105C	ESR mohm 100khz 25C	Stray Inductance nH
LC2-AN106K325VR	10	65	185	70	0.49	23	60	0.67	20	50	0.97	16	1.65	15
LC2-AN126K325VR	12	65	220	80	0.43	26	70	0.56	23	55	0.91	18	1.45	15
LC2-AN156K325VR	15	65	260	100	0.30	33	90	0.37	29	70	0.60	23	1.35	15
LC2-AN186K325VR	18	90	180	120	0.23	39	100	0.33	33	80	0.52	26	1.2	15
LC2-AN206K325VR	20	90	185	130	0.22	42	110	0.30	36	90	0.45	29	1.1	15
LC2-AN226K325VR	22	90	220	150	0.19	49	120	0.29	39	100	0.42	33	0.95	15
LC2-AN256K325VR	25	90	250	180	0.15	59	150	0.21	49	120	0.33	39	0.85	15
LC2-AN306K325VR	30	90	260	200	0.13	65	180	0.16	59	130	0.32	42	0.75	15
LC2-AN356K325VR	35	90	295	250	0.09	81	200	0.14	65	150	0.25	49	0.7	15

LC1-AN 330Vrms

Part Number	Cn uF	Diameter D mm	Length L mm	Frequency range kHz	Max. Irms +90C	Rθ C/W +90C	Max. Power KVAR +90C	Max. Irms +105C	Rθ C/W +105C	Max. Power KVAR +105C	ESR mohm 100khz 25C	Stray Inductance nH
LC1-AN104K250VR	0.1	90	32	400~620	85	0.2	28	60	0.4	20	3.2	5
LC1-AN114K330VR	0.11	90	32	370~520	85	0.2	28	60	0.4	20	3.1	5
LC1-AN124K330VR	0.12	90	32	340~465	85	0.2	28	60	0.5	20	3	5
LC1-AN154K330VR	0.15	90	32	270~410	85	0.2	28	60	0.5	20	2.9	5
LC1-AN174K330VR	0.17	90	32	230~340	85	0.2	28	60	0.5	20	2.8	5
LC1-AN214K330VR	0.21	90	32	190~280	85	0.3	28	60	0.5	20	2.7	5
LC1-AN254K330VR	0.25	90	32	160~245	85	0.3	28	60	0.5	20	2.6	5
LC1-AN304K330VR	0.3	90	32	150~238	100	0.2	33	75	0.4	25	2.5	5
LC1-AN334K330VR	0.33	90	32	140~223	100	0.2	33	75	0.4	25	2.4	5
LC1-AN504K330VR	0.5	90	32	140~200	150	0.1	50	120	0.2	40	2.3	5
LC1-AN664K330VR	0.66	90	32	100~175	150	0.1	50	120	0.2	40	2.1	5

LC1-AN 350Vrms

Part Number	Cn uF	Diameter D mm	Length L mm	Frequency range kHz	Max. Irms +90C	Rθ C/W +90C	Max. Power KVAR +90C	Max. Irms +105C	Rθ C/W +105C	Max. Power KVAR +105C	ESR mohm 100khz 25C	Stray Inductance nH
LC1-AN503K350VR	0.05	50	85	300~520	26	1.8	9	20	1.8	7	3.3	5

In all circumstance, it is better to keep the actual capacitor Irms smaller than the listed Irms at the specific temperature.

LC3-AN 360Vrms / 630Vdc

Part Number	Cn uF	Diameter D mm	Length L mm	Max. Irms +55C	Rθ C/W +55C	Max. Power KVAR +55C	Max. Irms +85C	Rθ C/W +85C	Max. Power KVAR +85C	Max. Irms +105C	Rθ C/W +105C	Max. Power KVAR +105C	ESR mohm 100khz 25C	Stray Inductance nH
LC3-AN405K360VR	4	65	60	50	1.3	18	40	2.0	14	25	5	9	1.6	25
LC3-AN505K360VR	5	90	60	60	1.1	21	45	1.9	16	30	4.3	11	1.3	25
LC3-AN605K360VR	6	90	60	80	0.8	29	55	1.7	20	40	3.3	14	1.0	25
LC3-AN705K360VR	7	90	60	90	0.8	32	65	1.5	23	45	3.1	16	0.8	25
LC3-AN805K360VR	8	90	60	100	0.8	36	75	1.5	27	50	3.3	18	0.6	25

LC2-AN 360Vrms / 1400Vdc

P/N	Cn uF	Diameter D mm	Length L mm	Max. Irms +70C	Rθ C/W +70C	Max. Power KVAR +70C	Max. Irms +85C	Rθ C/W +85C	Max. Power KVAR +85C	Max. Irms +105C	Rθ C/W +105C	Max. Power KVAR +105C	ESR mohm 100khz 25C	Stray Inductance nH
LC2-AN605K360VR	6	65	185	60	0.67	22	50	0.97	18	40	1.52	14	1.65	15
LC2-AN805K360VR	8	65	225	80	0.43	29	65	0.65	23	45	1.36	16	1.45	15
LC2-AN106K360VR	10	90	155	100	0.32	36	70	0.65	25	55	1.06	20	1.25	15
LC2-AN126K360VR	12	90	185	120	0.25	43	100	0.36	36	80	0.57	29	1.1	15
LC2-AN156K360VR	15	90	220	150	0.19	54	120	0.29	43	100	0.42	36	0.95	15
LC2-AN206K360VR	20	90	270	180	0.15	65	150	0.21	54	120	0.33	43	0.85	15

LC1-AN 400Vrms

Part Number	Cn uF	Diameter D mm	Length L mm	Frequency range kHz	Max. Irms +90C	Rθ C/W +90C	Max. Power KVAR +90C	Max. Irms +105C	Rθ C/W +105C	Max. Power KVAR +105C	ESR mohm 100khz 25C	Stray Inductance nH
LC1-AN853K400VR	0.085	50	85	280~465	42	0.8	17	30	0.8	12	3	5
LC1-AN104K400VR-V1	0.1	50	85	220~410	42	0.9	17	30	0.9	12	2.6	5

LC1-AN 400Vrms

Part Number	Cn uF	Diameter D mm	Length L mm	Frequency range kHz	Max. Irms +90C	Rθ C/W +90C	Max. Power KVAR +90C	Max. Irms +105C	Rθ C/W +105C	Max. Power KVAR +105C	ESR mohm 100khz 25C	Stray Inductance nH
LC1-AN104K400VR-V2	0.1	90	32	330~620	72	0.4	29	51	0.7	20	3.3	5
LC1-AN114K400VR	0.11	90	32	300~520	72	0.4	29	51	0.7	20	3.3	5
LC1-AN124K400VR	0.12	90	32	280~465	72	0.4	29	51	0.8	20	3.3	5
LC1-AN154K400VR	0.15	90	32	220~410	72	0.4	29	51	0.8	20	3.3	5
LC1-AN174K400VR	0.17	90	32	190~340	72	0.4	29	51	0.8	20	3.3	5
LC1-AN214K400VR	0.21	90	32	160~280	72	0.4	29	51	0.9	20	3.3	5
LC1-AN254K400VR	0.25	90	32	130~245	72	0.4	29	51	0.9	20	3.3	5
LC1-AN304K400VR	0.3	90	32	130~238	85	0.3	34	64	0.6	26	2.5	5
LC1-AN334K400VR	0.33	90	32	120~223	85	0.3	34	64	0.6	26	2.3	5
LC1-AN504K400VR	0.5	90	32	110~200	125	0.2	50	100	0.3	41	2.4	5
LC1-AN664K400VR	0.66	90	32	80~175	125	0.2	50	100	0.3	41	2.4	5

LC2-AN 415Vrms / 1700Vdc

P/N	Cn uF	Diameter D mm	Length L mm	Max. Irms +70C	Rθ C/W +70C	Max. Power KVAR +70C	Max. Irms +85C	Rθ C/W +85C	Max. Power KVAR +85C	Max. Irms +105C	Rθ C/W +105C	Max. Power KVAR +105C	ESR mohm 100khz 25C	Stray Inductance nH
LC2-AN305K415VR	3	65	150	40	1.19	17	35	1.55	15	25	3.05	10	2.10	15
LC2-AN405K415VR	4	65	185	50	0.89	21	40	1.39	17	30	2.47	12	1.8	15
LC2-AN505K415VR	5	65	220	60	0.65	25	50	0.94	21	40	1.47	17	1.7	15
LC2-AN605K415VR	6	65	260	70	0.54	29	60	0.74	25	50	1.07	21	1.5	15
LC2-AN805K415VR	8	90	185	100	0.29	42	80	0.45	33	65	0.68	27	1.4	15
LC2-AN106K415VR	10	90	220	120	0.23	50	100	0.33	42	80	0.52	33	1.2	15
LC2-AN126K415VR	12	90	260	150	0.16	62	120	0.25	50	100	0.36	42	1.1	15

LC1-AN 450Vrms

Part Number	Cn uF	Diameter D mm	Length L mm	Frequency range kHz	Max. Irms +90C	Rθ C/W +90C	Max. Power KVAR +90C	Max. Irms +105C	Rθ C/W +105C	Max. Power KVAR +105C	ESR mohm 100khz 25C	Stray Inductance nH
LC1-AN503K450VR	0.05	50	85	110~190	26	2.7	12	20	2.7	9	3.3	5

LC3-AN 450Vrms / 800Vdc

Part Number	Cn uF	Diameter D mm	Length L mm	Max. Irms +55C	Rθ C/W +55C	Max. Power KVAR +55C	Max. Irms +85C	Rθ C/W +85C	Max. Power KVAR +85C	Max. Irms +105C	Rθ C/W +105C	Max. Power KVAR +105C	ESR mohm 100khz 25C	Stray Inductance nH
LC3-AN255K450VR	2.5	65	60	40	1.0	18	25	2.6	11	20	4.0	9	3.1	25
LC3-AN305K450VR	3	65	60	45	1.1	20	35	1.9	16	25	3.6	11	2.2	25
LC3-AN405K450VR	4	90	60	65	0.9	29	45	1.9	20	30	4.3	13	1.3	25
LC3-AN505K450VR	5	90	60	80	0.9	36	55	1.8	25	40	3.5	18	0.9	25

In all circumstance, it is better to keep the actual capacitor Irms smaller than the listed Irms at the specific temperature.

LC2-AN 450Vrms / 2000Vdc

P/N	Cn uF	Diameter D mm	Length L mm	Max. Irms +70C	Rθ C/W +70C	Max. Power KVAR +70C	Max. Irms +85C	Rθ C/W +85C	Max. Power KVAR +85C	Max. Irms +105C	Rθ C/W +105C	Max. Power KVAR +105C	ESR mohm 100khz 25C	Stray Inductance nH
LC2-AN305K450VR	3	65	230	45	0.86	20	40	1.09	18	30	1.93	14	2.30	15
LC2-AN405K450VR	4	65	295	60	0.53	27	50	0.76	23	40	1.19	18	2.1	15
LC2-AN505K450VR	5	90	180	70	0.44	32	60	0.60	27	50	0.86	23	1.85	15
LC2-AN605K450VR	6	90	210	80	0.38	36	70	0.49	32	60	0.67	27	1.65	15
LC2-AN805K450VR	8	90	250	100	0.27	45	85	0.37	38	70	0.54	32	1.5	15

LC1-AN 550Vrms

Part Number	Cn uF	Diameter D mm	Length L mm	Frequency range kHz	Max. Irms +90C	Rθ C/W +90C	Max. Power KVAR +90C	Max. Irms +105C	Rθ C/W +105C	Max. Power KVAR +105C	ESR mohm 100khz 25C	Stray Inductance nH
LC1-AN853K550VR	0.085	50	85	105~150	42	1.1	23	30	1.1	17	3	5
LC1-AN104K550VR	0.100	50	85	95~145	42	1.3	23	30	1.3	17	2.6	5

LC3-AN 550Vrms / 1000Vdc

Part Number	Cn uF	Diameter D mm	Length L mm	Max. Irms +55C	Rθ C/W +55C	Max. Power KVAR +55C	Max. Irms +85C	Rθ C/W +85C	Max. Power KVAR +85C	Max. Irms +105C	Rθ C/W +105C	Max. Power KVAR +105C	ESR mohm 100khz 25C	Stray Inductance nH
LC3-AN155K550VR	1.5	65	60	30	1.8	16	20	4.0	11	15	7.2	8.3	3.1	25
LC3-AN205K550VR	2	65	60	40	1.1	22	25	2.8	14	20	4.3	11	2.9	25
LC3-AN255K550VR	2.5	90	60	50	1.2	27	30	3.3	16	25	4.7	14	1.7	25
LC3-AN305K550VR	3	90	60	60	1.3	33	40	2.8	22	30	5.1	16	1.1	25
LC3-AN355K550VR	3.5	90	60	70	1.1	38	50	2.1	27	35	4.3	19	1.0	25

LC1-AN 630Vrms

Part Number	Cn uF	Diameter D mm	Length L mm	Frequency range kHz	Max. Irms +90C	Rθ C/W +90C	Max. Power KVAR +90C	Max. Irms +105C	Rθ C/W +105C	Max. Power KVAR +105C	ESR mohm 100khz 25C	Stray Inductance nH
LC1-AN253K630VR-V1	0.025	50	85	330~620	21	2.7	13	15	2.7	9	3.4	5
LC1-AN253K630VR-V2	0.025	50	114	190~340	56	0.3	35	40	0.3	25	4.8	8

LC1-AN 700Vrms

Part Number	Cn uF	Diameter D mm	Length L mm	Frequency range kHz	Max. Irms +90C	Rθ C/W +90C	Max. Power KVAR +90C	Max. Irms +105C	Rθ C/W +105C	Max. Power KVAR +105C	ESR mohm 100khz 25C	Stray Inductance nH
LC1-AN253K700VR	0.025	50	143	160~280	56	0.2	39	40	0.2	28	5.8	12
LC1-AN333K700VR	0.033	50	143	130~245	56	0.2	39	40	0.2	28	5.5	12

LC3-AN 750Vrms / 1300Vdc

Part Number	Cn uF	Diameter D mm	Length L mm	Max. Irms +55C	Rθ C/W +55C	Max. Power KVAR +55C	Max. Irms +85C	Rθ C/W +85C	Max. Power KVAR +85C	Max. Irms +105C	Rθ C/W +105C	Max. Power KVAR +105C	ESR mohm 100khz 25C	Stray Inductance nH
LC3-AN105K750VR	1	65	60	25	1.5	19	15	4.0	11	12	6.3	9	5.5	25
LC3-AN125K750VR	1.2	90	60	30	1.3	22	20	3.0	15	15	5.3	11	4.2	25
LC3-AN155K750VR	1.5	90	60	40	1.1	30	25	2.8	19	20	4.3	15	2.9	25
LC3-AN185K750VR	1.8	90	60	45	1.5	34	35	2.5	26	25	4.8	19	1.7	25
LC3-AN205K750VR	2	90	60	45	1.6	34	35	2.7	26	25	5.3	19	1.5	25

LC1-AN 800Vrms

Part Number	Cn uF	Diameter D mm	Length L mm	Frequency range kHz	Max. Irms +90C	Rθ C/W +90C	Max. Power KVAR +90C	Max. Irms +105C	Rθ C/W +105C	Max. Power KVAR +105C	ESR mohm 100khz 25C	Stray Inductance nH
LC1-AN253K800VR-V1	0.025	50	85	150~200	21	4.1	17	15	4.1	12	3.4	5
LC1-AN253K800VR-V2	0.025	50	114	140~460	56	0.4	45	40	0.4	32	4.8	8

LC1-AN 840Vrms

Part Number	Cn uF	Diameter D mm	Length L mm	Frequency range kHz	Max. Irms +90C	Rθ C/W +90C	Max. Power KVAR +90C	Max. Irms +105C	Rθ C/W +105C	Max. Power KVAR +105C	ESR mohm 100khz 25C	Stray Inductance nH
LC1-AN503K840VR	0.050	50	143	130~238	58	0.2	49	40	0.2	34	6	12

LC1-AN 900Vrms

Part Number	Cn uF	Diameter D mm	Length L mm	Frequency range kHz	Max. Irms +90C	Rθ C/W +90C	Max. Power KVAR +90C	Max. Irms +105C	Rθ C/W +105C	Max. Power KVAR +105C	ESR mohm 100khz 25C	Stray Inductance nH
LC1-AN253K900VR	0.025	50	143	130~410	56	0.3	50	40	0.3	36	5.8	12
LC1-AN333K900VR	0.033	50	143	130~310	56	0.3	50	40	0.3	36	5.5	12

LC1-AN 1000Vrms

Part Number	Cn uF	Diameter D mm	Length L mm	Frequency range kHz	Max. Irms +90C	Rθ C/W +90C	Max. Power KVAR +90C	Max. Irms +105C	Rθ C/W +105C	Max. Power KVAR +105C	ESR mohm 100khz 25C	Stray Inductance nH
LC1-AN503K1kVR	0.05	50	172	120~223	55	0.2	55	40	0.2	40	6.5	15

LC1-AN 1100Vrms

Part Number	Cn uF	Diameter D mm	Length L mm	Frequency range kHz	Max. Irms +90C	Rθ C/W +90C	Max. Power KVAR +90C	Max. Irms +105C	Rθ C/W +105C	Max. Power KVAR +105C	ESR mohm 100khz 25C	Stray Inductance nH
LC1-AN503K1100VR	0.05	50	143	100~180	58	0.3	64	40	0.3	44	6	12

LC1-AN 1400Vrms

Part Number	Cn uF	Diameter D mm	Length L mm	Frequency range kHz	Max. Irms +90C	Rθ C/W +90C	Max. Power KVAR +90C	Max. Irms +105C	Rθ C/W +105C	Max. Power KVAR +105C	ESR mohm 100khz 25C	Stray Inductance nH
LC1-AN503K1400VR	0.05	50	172	90~140	55	0.3	78	40	0.3	56	6.5	15

In all circumstance, it is better to keep the actual capacitor Irms smaller than the listed Irms at the specific temperature.