

8 High Voltage Snubber Capacitors : STD-03LM series

Applications :

- High Current, Resonance and Energy Discharge
- Resonant Circuit
- AC / DC voltage application
- Capacitor can be discharged at rated voltage directly without any protective component with temperature up to 85C
- High Power Rectification
- Can be used for repetition frequency application
- Diode absorption and protection

Features :

- low inductance
- excellent Frequency Response
- RMS Current Rating
- high peak Pulse Current Ratings (dv/dt)
- higher Temperature range
- M6 and M8 screw threads/nut as capacitor electrical terminal

When compare with traditional Paper Dielectric, Oil Impregnated and Metal Enclosure Capacitor :

- Plastic enclosure : safer when compare with oil impregnated capacitor, especially high voltage application.
- Dry construction : Epoxy Resin end seal and doesn't have impregnant leakage problem
- Plastic enclosure and Epoxy Resin are flame retardant UL94-V0 grade
- compact size and light weight
- Higher Insulation Resistance and Insulation Voltage
- Low capacitor loss
- DC Blocking / Ultra-Low Leakage version on request

Electrical Characteristics :

Rated Voltage : 1,100Vdc – 3,600Vdc / 550Vac – 1,800Vac

Capacitance : 1uF – 10uF

Maximum Ripple Current : up to 60A

Peak discharge current - I peak : up to 4300A

Tolerance : +/-10%, +/-5% at 22C 1kHz,

Testing Voltage : 1.3 x Un 10sec (can be customized design)

Insulation Resistance :250Vdc +23C >= 15,000Mohm

Low ESR and series Inductance

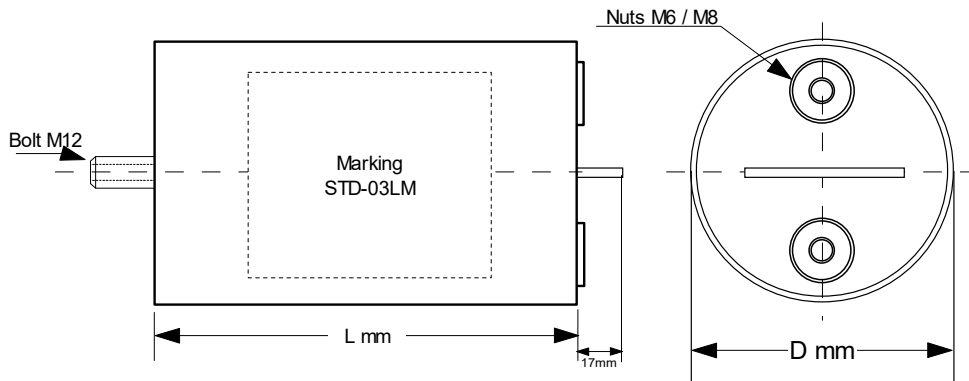
Temperature range : +70C / +85C (depends on capacitor raw materials)

Ultra-Low Leakage version is available on request

Our capacitors can be customized according to the customer's requirement



Drawing :



Specifications and Size :
STD-03LM : 1100Vdc / 550Vac

P/N :	Cn uF	Diameter D mm	Length L mm	dv/dt v/us	Peak Current I _{p-p} A	ESL nH	ESR (mohm) 100KHz	Max. I _{rms} 70C
STD-03LM335K1100D	3.3	65	165	350	1155	30	1.4	40
STD-03LM405K1100D	4	65	165	350	1400	30	1.3	40
STD-03LM505K1100D	5	65	165	350	1750	30	1.1	45
STD-03LM605K1100D	6	65	165	350	2100	30	0.85	50
STD-03LM705K1100D	7	90	165	350	2450	30	0.77	50
STD-03LM805K1100D	8	90	165	350	2800	30	0.7	60
STD-03LM106K1100D	10	90	165	350	3500	30	0.6	60

STD-03LM : 1400Vdc / 700Vac

P/N :	Cn uF	Diameter D mm	Length L mm	dv/dt v/us	Peak Current I _{p-p} A	ESL nH	ESR (mohm) 100KHz	Max. I _{rms} 70C
STD-03LM335K1400D	3.3	65	165	610	2013	30	1.4	40
STD-03LM405K1400D	4	65	165	610	2440	30	1.3	40
STD-03LM505K1400D	5	90	165	610	3050	30	1.1	45
STD-03LM605K1400D	6	90	165	610	3660	30	0.85	50
STD-03LM805K1400D	8	90	165	610	4880	30	0.7	60

STD-03LM : 1800Vdc / 900Vac

P/N :	Cn uF	Diameter D mm	Length L mm	dv/dt v/us	Peak Current I _{p-p} A	ESL nH	ESR (mohm) 100KHz	Max. I _{rms} 70C
STD-03LM305K1800D	3	65	230	640	1920	40	1.5	40
STD-03LM335K1800D	3.3	65	230	640	2112	40	1.4	40
STD-03LM405K1800D	4	90	230	640	2560	40	1.2	50
STD-03LM505K1800D	5	90	230	640	3200	40	1.1	50
STD-03LM605K1800D	6	90	230	640	3840	40	0.95	60

STD-03LM : 2400Vdc / 1200Vac

P/N :	Cn uF	Diameter D mm	Length L mm	dv/dt v/us	Peak Current I _{p-p} A	ESL nH	ESR (mohm) 100KHz	Max. I _{rms} 70C
STD-03LM255K2400D	2.5	65	295	850	2125	55	1.6	40
STD-03LM305K2400D	3	65	295	850	2550	55	1.5	45
STD-03LM355K2400D	3.5	90	295	850	2975	55	1.3	50
STD-03LM405K2400D	4	90	295	850	3400	55	1.2	50
STD-03LM505K2400D	5	90	295	850	4250	55	0.95	60

STD-03LM : 2800Vdc / 1400Vac

P/N :	Cn uF	Diameter D mm	Length L mm	dv/dt v/us	Peak Current I _{p-p} A	ESL nH	ESR (mohm) 100KHz	Max. I _{rms} 70C
STD-03LM205K2800D	2	65	295	1120	2240	55	1.7	40
STD-03LM225K2800D	2.2	90	295	1120	2464	55	1.6	40
STD-03LM255K2800D	2.5	90	295	1120	2800	55	1.4	45
STD-03LM305K2800D	3	90	295	1120	3360	55	1.2	50
STD-03LM405K2800D	4	90	295	1120	4480	55	0.95	50

STD-03LM : 3200Vdc / 1600Vac

P/N :	Cn uF	Diameter D mm	Length L mm	dv/dt v/us	Peak Current I _{p-p} A	ESL nH	ESR (mohm) 100KHz	Max. I _{rms} 70C
STD-03LM155J3200D	1.5	65	295	1400	2100	55	2.2	35
STD-03LM205J3200D	2	90	295	1400	2800	55	1.7	40
STD-03LM225J3200D	2.2	90	295	1400	3080	55	1.5	40
STD-03LM255J3200D	2.5	90	295	1400	3500	55	1.3	50
STD-03LM305J3200D	3	90	295	1400	4200	55	1.1	50

For any Capacitance, Voltage, RMS Current, dv/dt and Peak Pulse Discharge Current not listed, please contact us for a suggestion.

STD-03LM : 3600Vdc / 1800Vac

P/N :	Cn uF	Diameter D mm	Length L mm	dv/dt v/us	Peak Current I_{p-p} A	ESL nH	ESR (mohm) 100KHz	Max. I_{rms} 70C
STD-03LM125J3600D	1.2	65	295	1780	2136	55	2.5	35
STD-03LM155J3600D	1.5	90	295	1780	2670	55	2.2	35
STD-03LM205J3600D	2	90	295	1780	3560	55	1.6	40
STD-03LM225J3600D	2.2	90	295	1780	3916	55	1.4	40
STD-03LM255J3600D	2.5	90	295	1780	4450	55	1.2	50

For any Capacitance, Voltage, RMS Current, dv/dt and Peak Pulse Discharge Current not listed, please contact us for a suggestion.